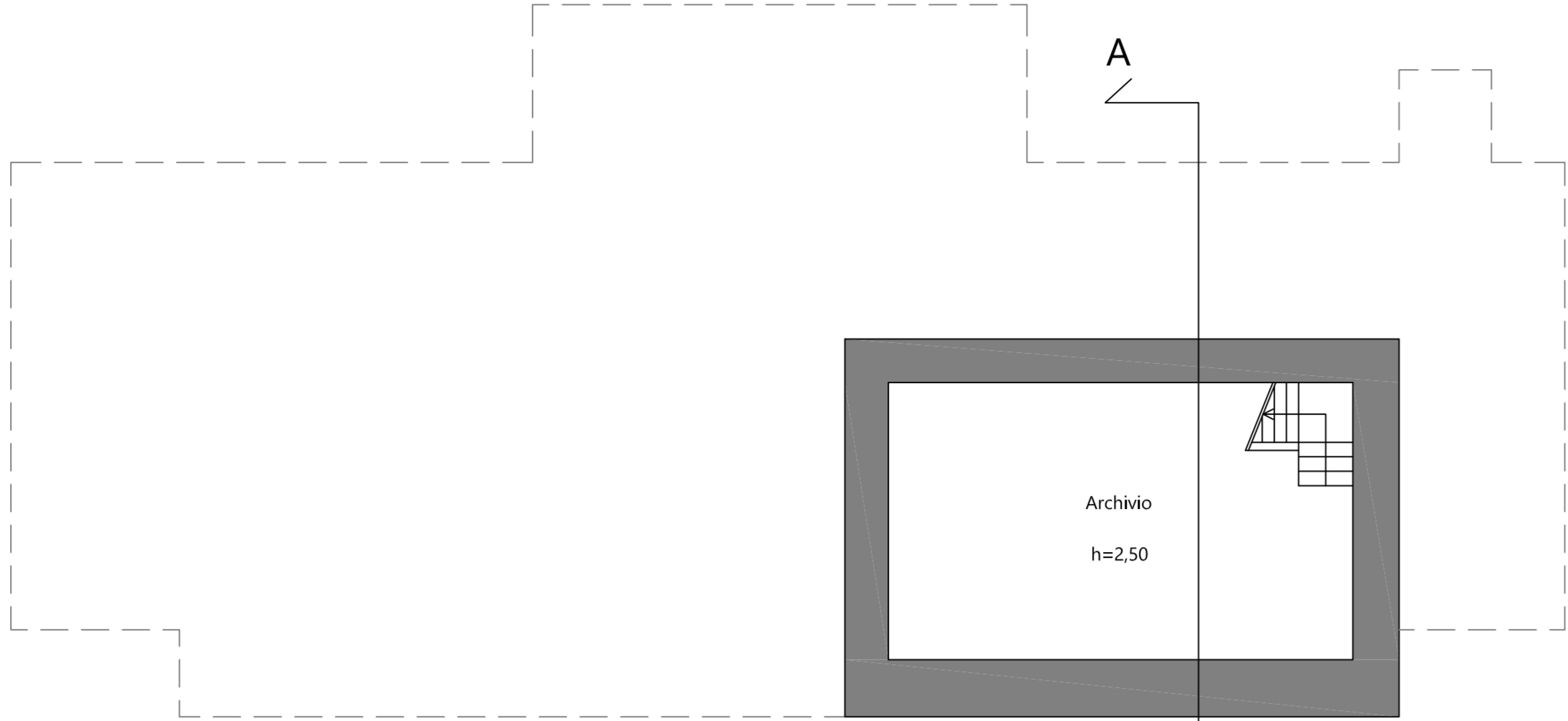
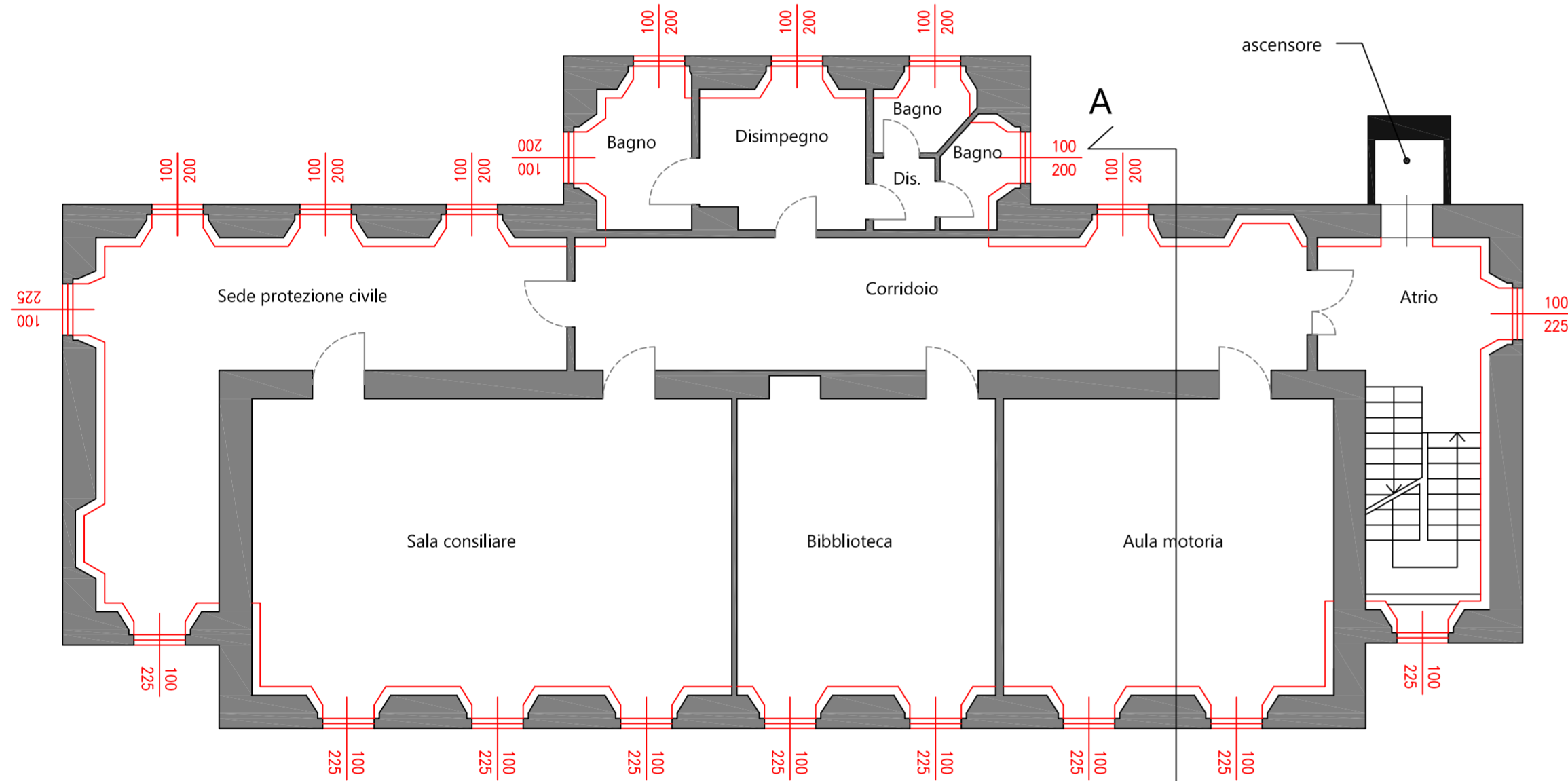


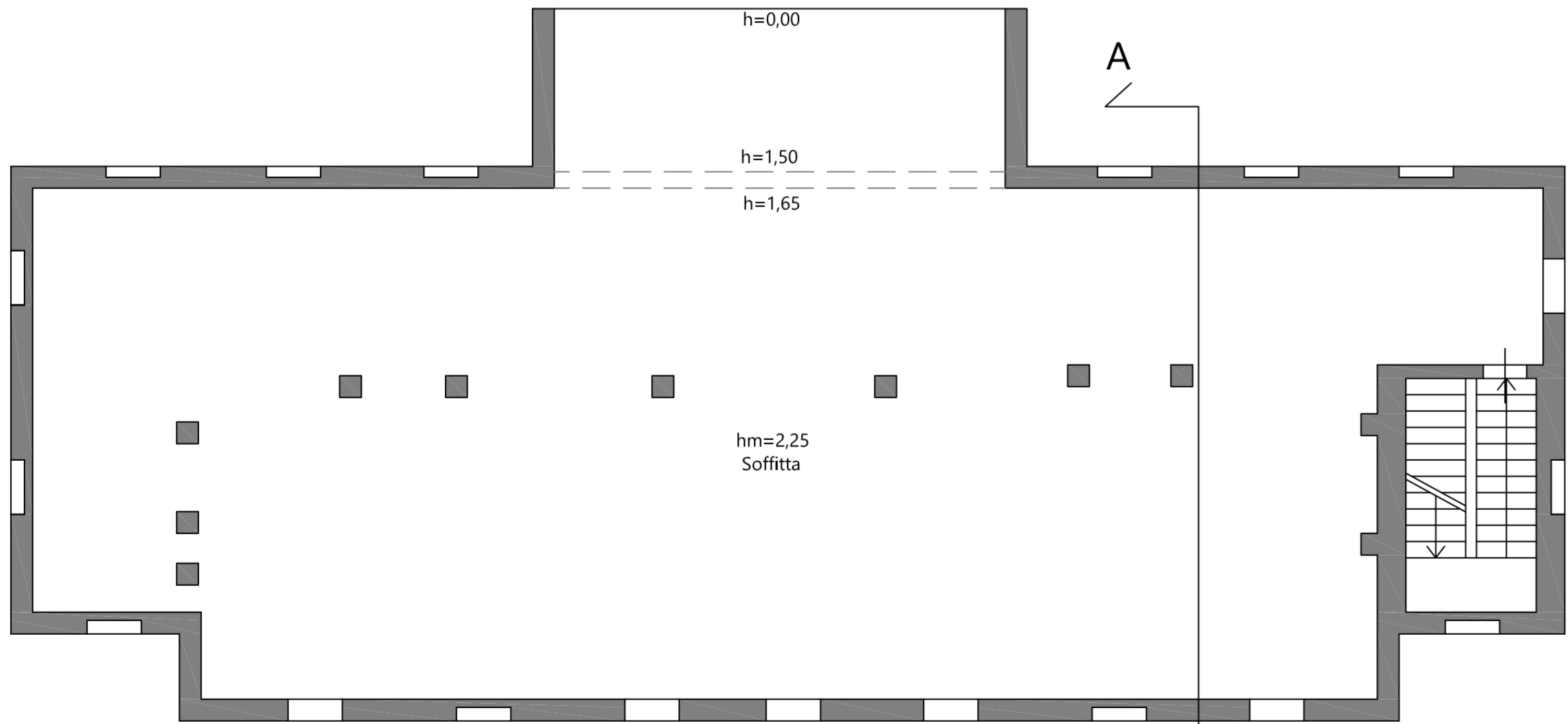
PIANTA PIANO SEMINTERRATO
NON OGGETTO D'INTERVENTO



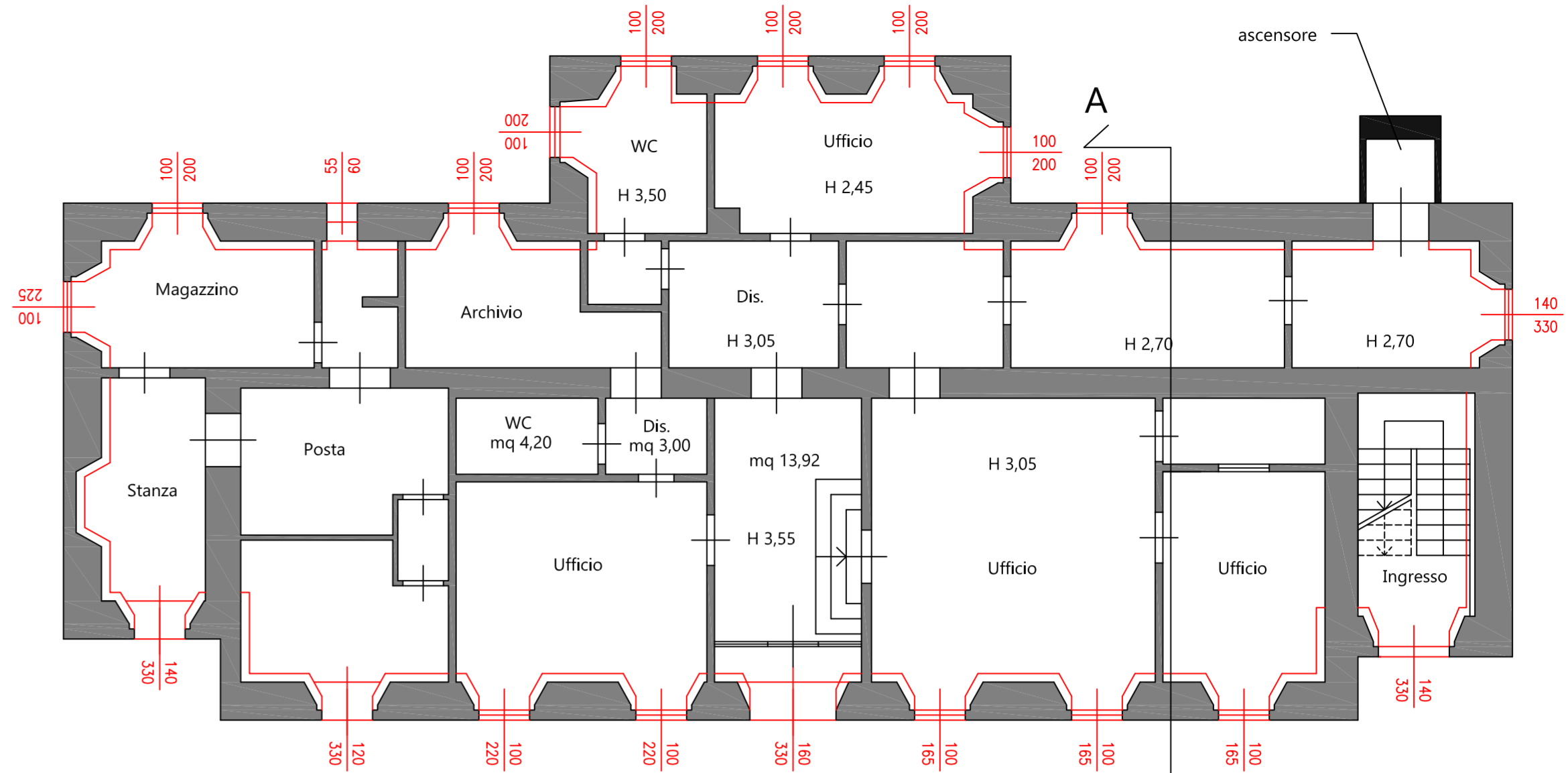
PIANTA PIANO PRIMO
h 3.65



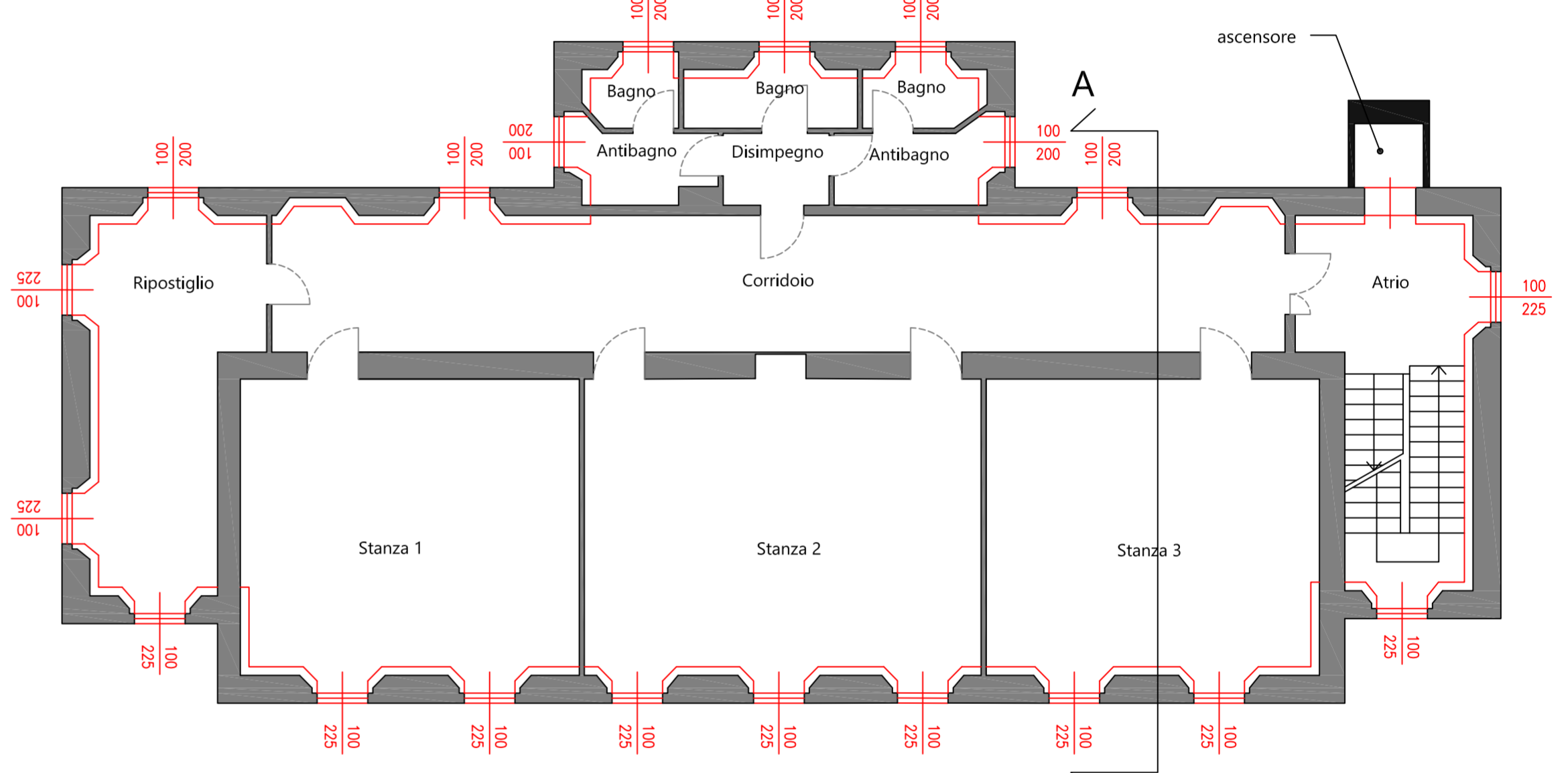
PIANTA PIANO TERZO - SOTTOTETTO
NON OGGETTO D'INTERVENTO



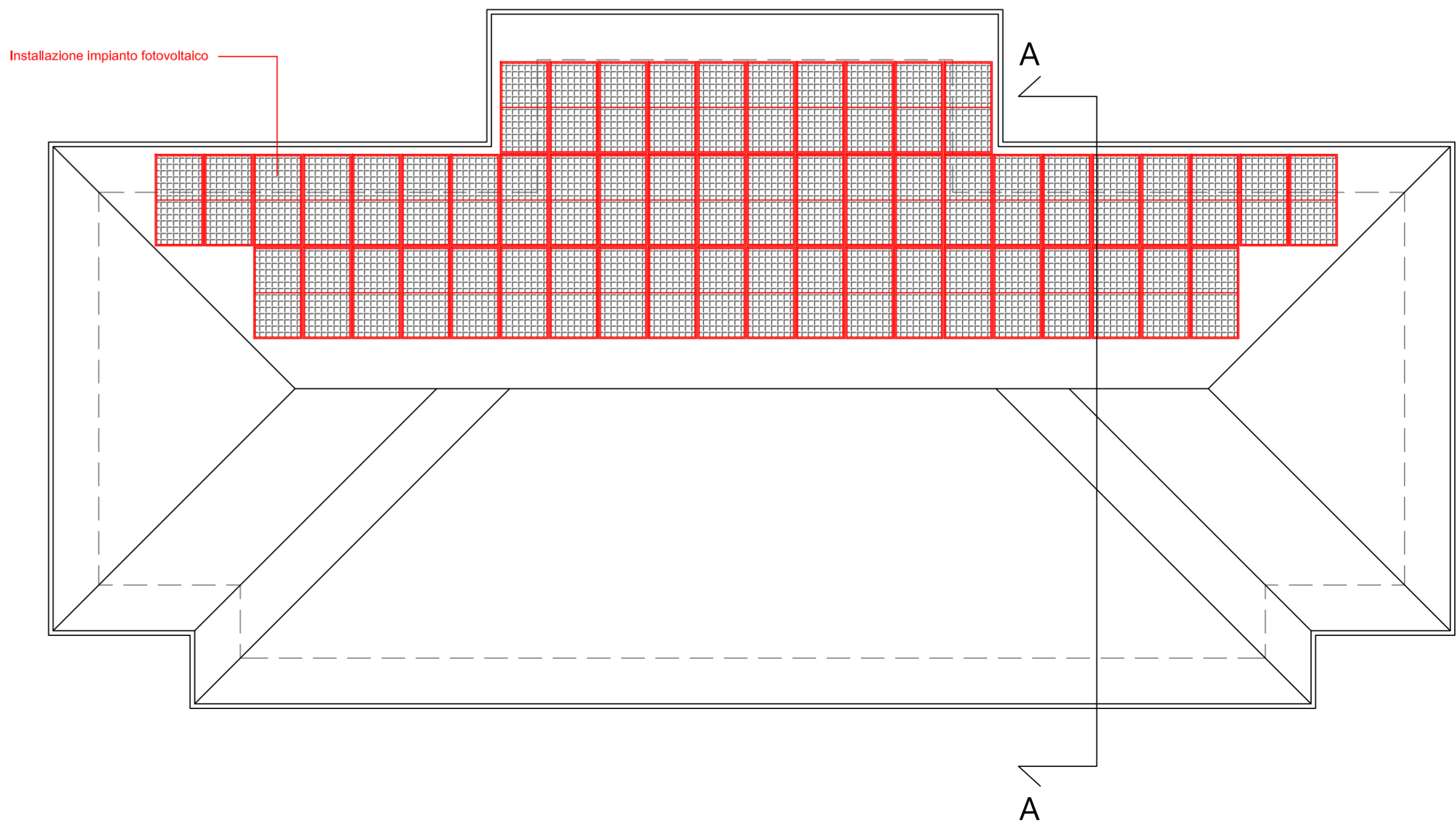
PIANTA PIANO TERRA



PIANTA PIANO SECONDO
h 3.45



PIANTA COPERTURA



ARCHITETTO DE PEDRO FABIO VIA CASTAGNETO 13 - 25050 PASPARDO BS		TAVOLA 4 Pianta sovrapposizione	
Incudine (BS) - Piazza G. Marconi		18/06/2025	scala: 1:100
PROGETTO ESECUTIVO: RIQUALIFICAZIONE ENERGETICA COMPLESSO EDILIZIO COMUNALE ADIBITO A MUNICIPIO E SERVIZI CORRELATI			
COMMITTENTE: Comune di Incudine		PROGETTISTA: Arch. De Pedro Fabio	

